



AUCTION

SUNDAY, APRIL 19TH, 2026

SALE TIME: 11:00 AM CT

LOCATION: FT PIERRE COMMUNITY & YOUTH INVOLVED CENTER



**NOTES: MANY ITEMS IN LIKE-NEW CONDITION ON THIS AUCTION!
MAKE PLANS TO ATTEND-YOU WON'T BE DISAPPOINTED!**

GUNS-AMMO-ARCHERY

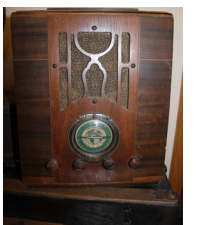
Aero Precision mod X15 multi caliber-semi auto-test fired only;
 Rock River LAR-15 5.56 semi-auto; Hipoint Firearms mod 995 9mm x 19 semi-auto;
 Browning SA-22 rifle -unfired; Browning SA-22 rifle-excellent;
 Remington mod 700 bolt action-synthetic stock 223 cal with Leupold 3 x 9 vari xll;
 Remington mod 550-1 semi-auto 22 cal. with scope;
 Winchester 670A bolt action 30.06 with Weaver scope;
 Savage mod 93R17 bolt action 17HMR with SS heavy Brl and Bushnell scope;
 Russian 7.62 x 54 rimmed bolt action M91/30 imported by PW Arms;
 G Force Arms 12 ga pump 3" with 20" brl-unfired;
 Browning BPS 12 ga pump action-3"-ribbed 28" brl; Wm Moore Co dbl brl 12 ga;
 Ithaca mod 37 featherlight 12 ga 2 3/4" full choke; Winchester mod 1200 12ga 2 3/4"
 Western Field 12ga 2 3/4" pump action with c-lect-choke; Rossi 410 single shot
 3" unfired;
 Interarms 50 cal black powder rifle; 50 cal black powder rifle-Italy; Dikar 45 cal
 black powder; Smith and Wesson M&P 40 Stainless; Smith and Wesson 40
 Iowa State Patrol; Beretta mod 92FS 9mm x 19 parabellum; Smith and Wesson
 M&P 9mm-unfired; Ruger P95 DC 9mm x 19 unfired; Stoeger Arms Llama 380
 auto; Glock 17 9mm with B square scope rail; many extra magazines for 7.62x
 39 and .223/5.56; CMMG 22 cal conversion kit for AR; Pocket Pro-Prochono
 by competition electronics; Vintage 12 ga and 410 shot shells; vintage bags
 of shot by Olin;
Bullets: 2000ct 45ACP 230gr; 6,000ct 10mm 180gr; 2,000ct 9mm 115gr copper
 pl; 3,000ct 38 super 150gr; 3,000ct 9mm 150gr; 3,500ct 45 ACP 200gr; 3,000ct
 45 ACP 230gr; 2,000ct 45 ACP 200gr; 1,500ct 9mm 147gr; 1,000ct 9mm 127gr;
 1,000ct 44mag 240gr; 1,500ct 9mm 115gr; 2,000ct .223 55gr; 3,000ct 9mm
 150gr RN; 500ct .358 158gr; 1,000ct .358 158gr RN;
Cartridges: 1,000ct .223 55gr; 800ct 7.62 x 39 FMJ; 2,000ct 7.62 x 54 Rimmed;
 1,000ct 5.56 62gr green tip; 1,000ct 9mm luger 115gr FMJ; 1,000ct 7.62 x 39;
 2,000ct 22LR hollow pt; 440ct 7.62 x 54 rimmed-spam can; 2,500ct Blazer 22
 LR; 500ct Rem 22 LR; 4,500 Aguila 22LR 40gr; 950ct 17HMR; 120ct 30-06 in
 150gr and 180gr; Many boxes of 12 ga and 20 ga field and target loads;
Primers: 1,500ct #150 large pistol; 1,500ct #350 large pistol magnum; 9,000ct
 #200 small pistol magnum;
 MEC Reloader-12ga and 20 ga; Lead pot and molds; Archery targets;
 Browning mirage SL ML2A compound bow with case;
 Bowtech Diamond compound bow -like new; PSE Optima series recurve bow;

LAWN-GARDEN-OUTDOOR

Honda HSS 1332A hydrostatic 32" snowblower-near new; Cub Cadet LT 1050 mow-
 er 50" cut;
 Husqvarna 6.5hp walk behind mower; Agri Fab 2-wheel tow cart; Fimco lawn
 sprayer;
 TroyBilt Bronco rear tine tiller; "BE" power equipment pressure washer- Honda
 GC 160 engine;
 Predator 2000 Inverter generator-like new; Petra Tools HD 4000 battery powered
 4-gallon backpack sprayer; B&D 20V max alligator powered lopper; Remington
 electric pole saw;
 Stihl MS211C chain saw 18" bar; Chicago Electric leaf blower; Galaxie Bug Zapper;
 Stihl gas powered leaf blower; Stihl gas weed trimmer; Big Green Egg charcoal
 grill; 5'x10' 2-wheel Utility trailer; 2003 Aliner 15' A-frame pop-up camper with AC.
 (2) wooden and (2) fabric patio chairs; assorted rakes, shovels, and hand tools

HOUSEHOLD-COLLECTIBLE

Harrisville model A-6 36" 4-shaft loom with instruction book and
 supplies;
 Grace quilting frame with upgraded carriage-can be set up to
 queen size;
 20" quilting hoop with swivel stand, Accuquilt GO! Fabric cutter
 with assorted dies;
 "Brother" Overlock machine; box of yarn; Queen size bed with mat-
 tress/boxspring and metal headboard; Reclining Leather couch;
 Oak entertainment center; Sony stereo system;
 Large L-shaped office desk with pull out keyboard drawers, book
 shelf hutch, 3 drawer storage;
 Several modern lamps; hide a bed; GE Chest freezer;
 Vintage Atwater Kent tube breadbox radio with model E Round Speaker;
 Vintage Silvertone tombstone radio with wooden case, Technics receiver with (2)
 AR2A speakers,
 McIntosh MC60 mono vacuum tube power amplifier; Oak buffet 60" wide-excellent
 condition; 1841 Security Insurance Co glass sign-reverse painted gold leaf; vin-
 tage world globe on stand; 1930's Art Deco elec lamps; vintage baby dolls; col-
 lectible tea pots; mortar and pestle; ironwood animal carvings from South Africa;



WOODWORKING EQUIPMENT/TOOLS

Wood working bench 6'x3' with (2) vises; Delta dust collection system;
 Delta mod 14-650 Hollow Chisel mortiser; Performax mod 16-32 plus 1.5 hp drum
 sander;
 Grizzly G1073 Bandsaw 16" with 113" blade-2hp-17"x17" tilt table;
 Grizzly floor drill press-14"-3/4hp-12spd-5/8 chuck; Grizzly 6" slimline bench
 grinder;
 Grizzly 10" table saw with Shop Fox fence; Grizzly oscillating Spindle Sander-
 1hp-1720rpm-45-degree tilt; Delta 10" sliding compound miter saw with stand;
 Chicago Electric 10" industrial tile saw 2.5hp; Jet Special Edition long-bed
 6" Jointer-1hp-mod JJ-6CSX; Delta mod. 22-560 12 1/2" x 6" bench top planer;
 Rousseau router table with Porter Cable 7529 router;
 DeWalt DW 788 20" scroll saw; Bosch worm drive circular saw; Porter Cable framing
 nailer 3 1/2"; Bostich finish nailer 16250; Porter Cable brad nailer; Milwaukee
 saws all; 220V drop cords; Craftsman belt sander; Bosch 1/2" hammer drill; Kreg
 pocket-hole jig, Porter Cable Plate Joiner Kit-new; Forrest Dado Blades, Incra Jig
 Ultra fence system; Many drill bits; Forstner bits; palm sanders; Bosch router;
 Makita angle grinder; Many Bar Clamps of various sizes, C-clamps, Quick-grip
 hand clamps, 12pc wood carving set; 50+ router bits by Cummins and Warrior;
 (2) 8' alum cutting guides; Keller 28' Alum ext ladder; 5' wooden step ladder;
 Makita 2hp 2.6 gal air comp;

FISHING-HUNTING-SPORTING EQUIPMENT

Many good quality casting, spinning and downrigger fishing rods; Landing nets;
 Plano phantom tackle box; Tackle boxes full of plugs and jigs; 38" drift sock;
 Lowrance HDS 5X fishfinder; Hitch mounted tow guard; Yeti cooler; (2) Tree stands
 Dog crates-large and intermediate; RCBS rotary Case cleaner; sets of antlers;
 Case, Kershaw and Gerber knives; Avery ground force layout blind; Tanglefree
 Solo hunting blind, Shappell Jet Sled; MTM Predator shooting rest; Hunting
 chair; Camp Chairs; Rossignol XC60 X-country skis; (2) sets of golf clubs;
 Lemond bicycle with Bontrager accessories; Lemond Fitness Revmaster
 exercise bike with pilot II



SELLER: CRAIG MCINTYRE 605-280-5521

NICS check conducted on purchasers of firearms on sale day

www.actionauctionassociates.com

SD Real Estate License - #12502



TRIPLE A AUCTION COMPANY

Action Auction Associates, LLC

P.O. Box 505 • Onida, SD 57564

**Joe Sovell,
605-258-2546**

**Sale Day Phone
605-280-7656**

Assisted by:

Dave Richardson 605-222-6592

Clayton Keck 605-354-8468

Justin Dikoff 605-290-0635

**LUNCH
AVAILABLE**

Terms:

Cash or bankable check. No
 property to be removed until
 settled for. No warranties implied.
 Everything sold as is, where is. Not
 responsible for accidents or theft.
 All announcements made sale
 day take precedence over printed
 material.

Printed by Curt Merriman Printing, Inc. • Pierre, SD